



Reliable, 24/7 Wireless Connectivity When and Where You Need It!

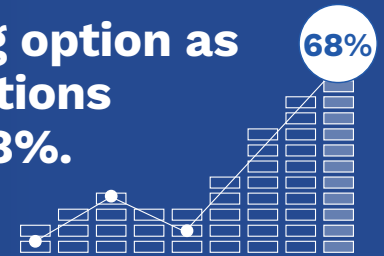
Spectrotel is the leader in 4G LTE, LTE Advanced, Fixed Wireless Access (FWA) and 5G for Wireless WAN (WWAN)

No Time for Slow

Digital transformation evolves at lightning speed. Technology that enhanced your network yesterday can be the cause of downtime today. Within our ever-changing workforce, virtual, hybrid, and on-site teams need to work seamlessly—with rapid, dependable connectivity and advanced security that simply cannot be met through a wired WAN alone. Many businesses are discovering wireless WAN as the solution.

Wireless is on track to become the leading option as connectivity needs increase with organizations expecting to grow their use of 4G/5G by 68%.

— The State of Wireless WAN 2022 – IDG/Cradlepoint survey



Spectrotel is Your End-to-End Wireless Provider

You want your teams to innovate; not be sidelined by bottlenecked connections. Spectrotel is your trusted source for a reliable, wireless WAN infrastructure that optimizes every working minute. We provide access to next-gen, 24/7 technology that creates a robust enterprise network enabling people, locations, and devices to be easily connected, anywhere.

Powered by broadband cellular, a wireless WAN gives you an over-the-air network that's scalable, fast, and versatile. We'll establish secure wireless broadband, optimized for high quality on all types of traffic wherever your business grows.

The Spectrotel Advantage

Customers choose Spectrotel for the peace of mind that comes with working with a company who provides the following advantages:

Usage Plan Monitoring and Optimization

Spectrotel offers the most agile service – dynamic, detailed, real-time monitoring – including notifications mid-month, resulting in the ability to stop overage charges before they happen. This cost savings is two-fold:

- a. Customers save on their monthly bills as a result of avoiding overage charges.
- b. Because Spectrotel provides this monitoring as part of the plan, customers do not need to dedicate or hire additional resources to perform this function in-house.

Agility/Speed to deployment

No one is as agile as Spectrotel when it comes to installation of the equipment and activation of service. Especially for customers who may need a temporary solution, are in a hard-to-reach location, or need a transient solution.

Offering Best-In-Class Coverage and Plan Flexibility

Spectrotel's relationships with the leading LTE and 5G providers (AT&T, Verizon, and T-Mobile) means we can design solutions with more flexibility and resiliency. Customers choose Spectrotel for the choice of carrier network, bandwidth, technology and plans including: Multi-Carrier Single SIM, 5G unlimited data, high-speed LTE Broadband, and pooled/non-pooled data plans. This plan flexibility results in true customization tailored for each location's specific need, and is never a "one size fits all" approach.

Spectrotel is the leader in 4GLTE, LTE Advanced, Fixed Wireless Access (FWA) and 5G for Wireless WAN (WWAN)

Solution Features and Benefits

Maximum Uptime - Improves network reliability, reduces downtime and operation expenses to troubleshoot WAN issues by up to 19%

Cost effective - Costs only a fraction of broadband links they can replace, as little as 10% of MPLS, T1s or DSL lines

Network Performance and Security - As good as, or better than, wired connectivity for loss, latency, and jitter

Network Agility - Startup connectivity that can be deployed immediately, getting your offices up and running in weeks sooner than wired lines

Coverage everywhere - Robust high-speed business internet across North America's top tier LTE and 5G wireless networks

Efficiency - Plans with up to 400 Mbps data speed throughput where available, with no overages and no throttling

10%



YOY growth in number of IoT devices with cellular connectivity.

— Cradlepoint. NetworkWorld. The State of Wireless WAN 2022.

54%



Average saved time previously used to troubleshoot WAN issues.

— Nemertes. Business Value Analysis. Viability of a Wireless WAN for Business.

58%



US companies that use 4G/5G as their only WAN link in their branch locations.

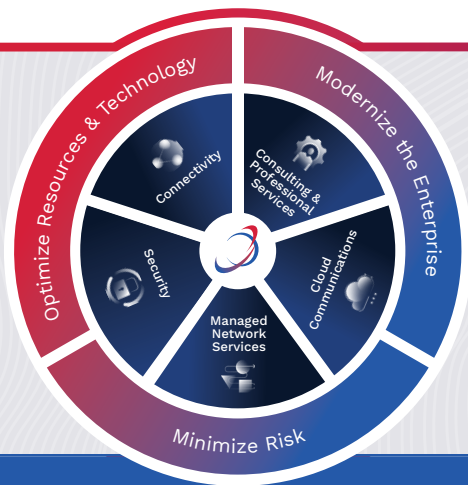
— Cradlepoint. Report: 4G and 5G for Wireless WAN Becomes Pervasive.

84%



Confidence in WWAN benefit to business.

— Cradlepoint. NetworkWorld. The State of Wireless WAN 2022.



The Spectrotel Difference

Leveraging more than 25 years coordinating and managing disparate carriers and networks, Spectrotel is pioneering the Next Generation Aggregator provider class to source and integrate best-in-class components and uniquely craft comprehensive integrated solutions. We dig deep to understand specific business requirements and take an expansive approach to recommend the optimal technology mix to minimize risk, optimize resources and technology, and modernize the enterprise.

Spectrotel can provide you with wireless WAN that not only is in lockstep with the technological evolution but forges a pathway in anticipation of future innovations.

For more information on **Wireless WAN (WWAN)**, contact



sales@spectrotel.com
877.542.9200
spectrotel.com



**Human Crafted.
Enterprise Optimized.**